

# **ODHA**

**O g d e n   D u n e s**  
**Home Association**

## **Pavilion**

---

## **Kratz Field**

# History | Facts

The Ogden Dunes Home Association (ODHA) was incorporated on August 28, 1957, and has been a steadfast presence in the community for decades.

When incorporated, ODHA owned the beach and all accessways, and residents had to be members to access the beach. In 1974, ODHA deeded the beach and 1 ½ accessways to the Town of Ogden Dunes. At that time, the beach and dunes covered over 21 acres.

During the 1960s and '70s, ODHA worked tirelessly alongside numerous individuals, organizations, and communities to oppose the Port of Indiana-Burns Harbor and fight pollution. Much of the original correspondence from these efforts is preserved in the ODHA archives.

The town of Ogden Dunes is publicly funded, making ODHA Membership voluntary, not mandatory. All residents of Ogden Dunes can enjoy the land, assets, and events hosted by ODHA, regardless of membership status.

ODHA is the largest private landowner in Ogden Dunes, second only to the Town of Ogden Dunes, owning just over 20 acres of land. This includes 16 ½ of the 18 beach accessways, Kratz Field, Nelson Reck, half of Serenity Park, 75% of Pollywog Pond, and the Community Garden. Additionally, we have two basketball courts, two tennis courts, and two playgrounds.

Pollywog Pond is a protected wetland of global ecological significance. Since 2006, ODHA has partnered with the National Park Service, with support from the Environmental Advisory Board, Street Department, and the Ogden Dunes Volunteer Fire Department, to undertake restoration efforts. The site played an instrumental role in Ogden Dunes being designated as a Bird Town Indiana community, by the Indiana Audubon Society.

ODHA's Community Garden has 22 seasonal rental plots and six communal plots. Renters volunteer their time and resources to maintain the communal plots, and all produce grown there is donated to the local Portage food bank.

ODHA's Youth Soccer Program at Kratz Field has existed for over six decades, hosting youth as well as male and female adult leagues. The soccer pitch at Kratz Field is regionally renowned for being the best in the area due to the sand under the turf, which allows for play within a couple of hours after a rain shower. ODHA has a four-week youth summer camp for children ages 3-10.

ODHA has been an integral part of the town of Ogden Dunes and wants to give back to the community that has supported us for decades.

ODHA is a 501(c)(3) Nonprofit Organization as of June 2024.

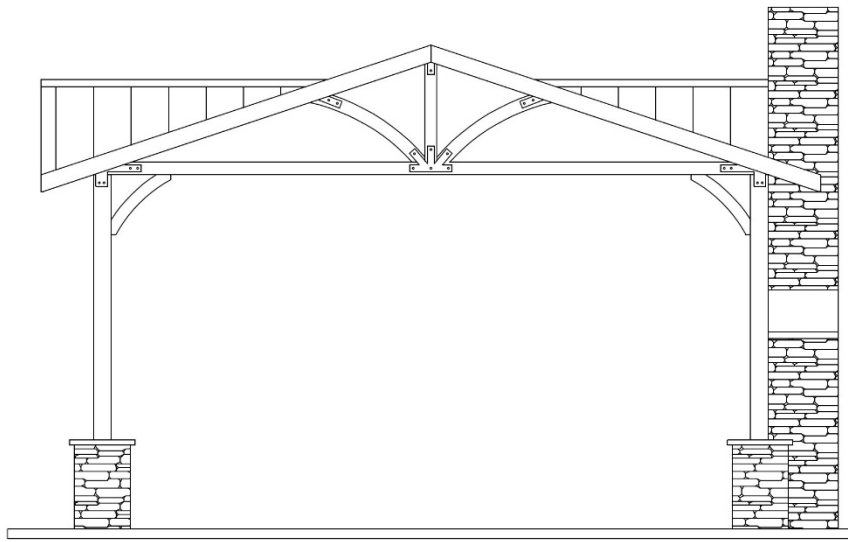
# Vision

---

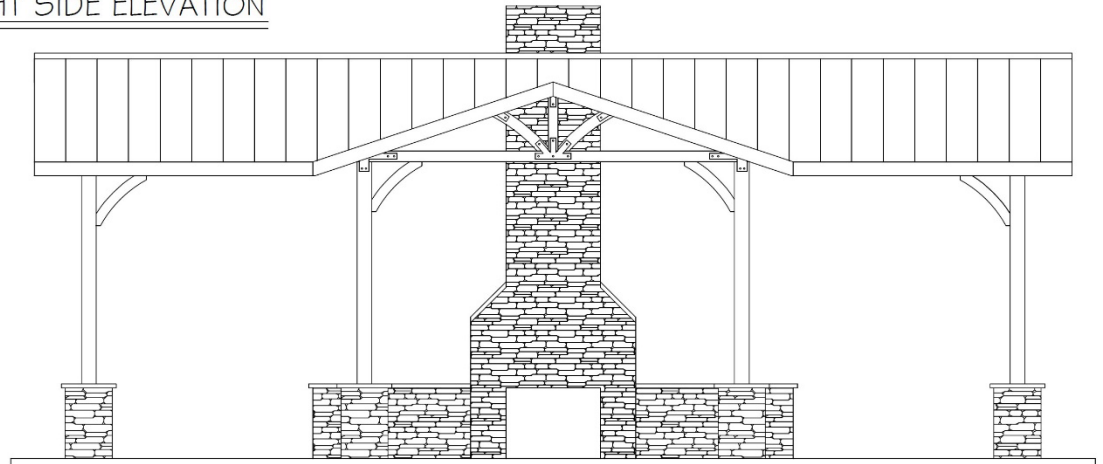
# Inspiration

Enjoyed for decades  
Memories for a lifetime

# Design



RIGHT SIDE ELEVATION



FRONT ELEVATION



\* Concept Illustration | Design not finalized



# Location



Nestled at the base of the dune

---

Views from every direction

# Cost Analysis

---

# Donation Tiers

We need donations to  
make our vision a reality

# Cost Analysis

Items	Price Range
<b>Site Prep</b>	7,000 – 12,000
Tree & fence removal, slab	
<b>Concrete   Brick   Ramp</b>	25,000 – 40,000
Material costs. Labor – Committed donated	
<b>Pavilion</b>	90,000 – 130,000
Prefabricated. Varies with size and options	
<b>Pavilion Labor</b>	25,000 – 35,000
Cost of installation. Possible full or partial donation	
<b>Stonework</b>	25,000 – 35,000
Stone & Labor. Labor, Possible full or partial donation	
<b>Electrical   Security</b>	13,500 – 21,000
Outlets, lighting, Service upgrade 100a/200a, security system	
<b>Plumbing   Septic   Gas</b>	12,000 – 19,000
Water Heater(s), sink, faucet	
<b>Furniture   Amenities</b>	12,000 – 18,000
Chairs, tables, grill(s), speakers, etc.	
<b>Bathroom Building   Updating</b>	15,000 – 25,000
Stone façade, Cedar trimming, bathroom upgrades, labor	
<b>Landscaping</b>	7,000 – 11,000
Plants, trees, Irrigation	
<b>Estimated Sub Total</b>	231,500 – 346,000
<b>Ongoing Repairs   Maintenance</b>	23,150 – 34,600
10% of total project cost   Estimated to last 10 - 12 years	
<b>Estimated Total</b>	254,650 – 380,600

## Pricing Range due to

Material and Labor Costs at time of Build  
Various Options based on Total Donations

Pricing as of 09.18.24

# Donation Tiers

2 5 0

4" x 8" Laser Etched Named Brick for Patio | Walkway | Pavilion

5 0 0

8" x 8" Laser Etched Named Brick for Patio | Walkway | Pavilion

7 5 0

12" x 12" Laser Etched Named Brick for Patio | Walkway | Pavilion

1, 0 0 0

## BRICK TRIO PACKAGE

One of Each Size Laser Etched Named Brick for Patio | Walkway | Pavilion

2, 5 0 0

## NAMED FURNITURE PACKAGE

1 Piece of furniture in or around the Pavilion and Kratz Field  
Donation Plaque on furniture | One of Each Size Laser Etched Brick

## Named Sponsorship

Name on Plaque Near Pavilion | One of Each Size Laser Etched Named Brick

BRONZE – 5,000

SILVER – 10,000

GOLD – 25,000

TITANIUM – 50,000

PLATINUM – 100,000

## To Donate | More Information

[ogdendunes.in.gov/home-association](http://ogdendunes.in.gov/home-association)

EVERY DONATION  
IS APPRECIATED

QUESTIONS:



**Andrew Gurschick** – President

312.718.0061 | [andrew@odha.in](mailto:andrew@odha.in)



SCAN ME